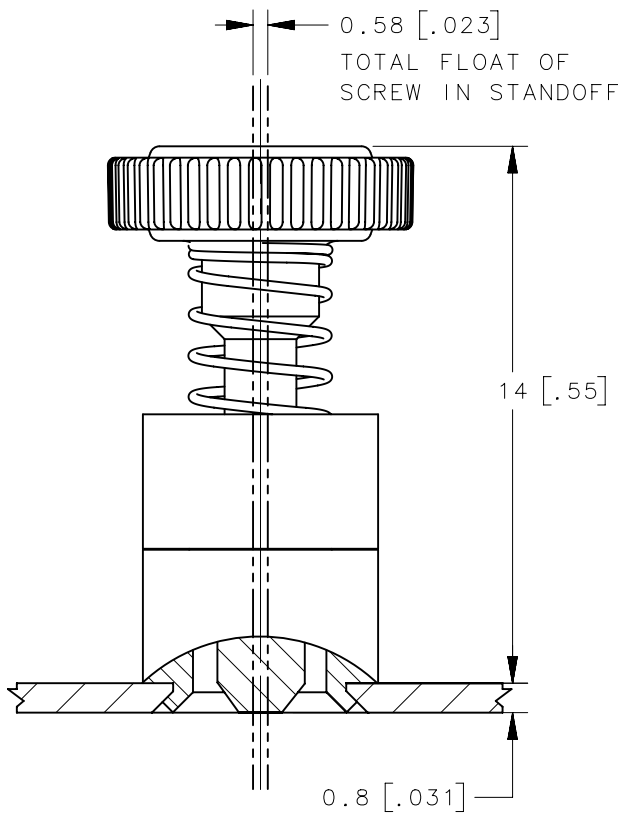
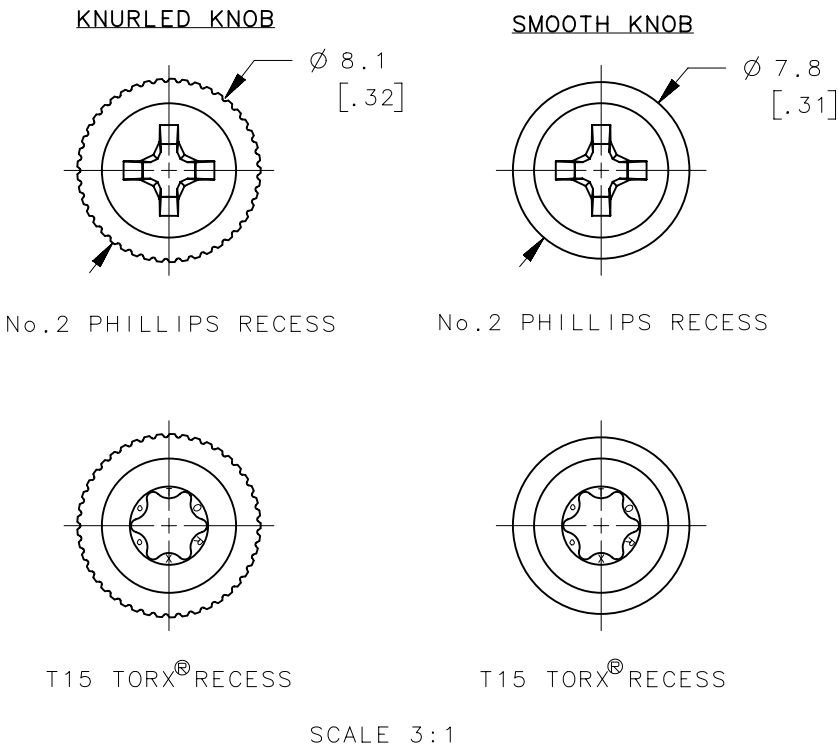


REVISION HISTORY			
REV	DATE	BY	DESCRIPTION
C	20JUN2012	BGL/TVA	PRN: P2012-0860

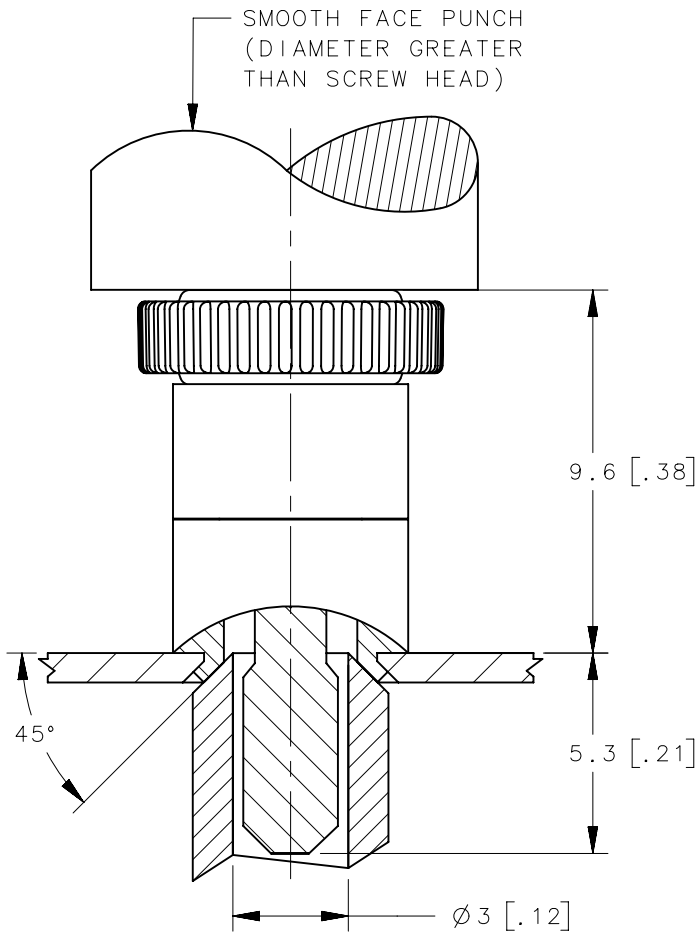
PART NUMBER 52-31-11-4-EEE SHOWN



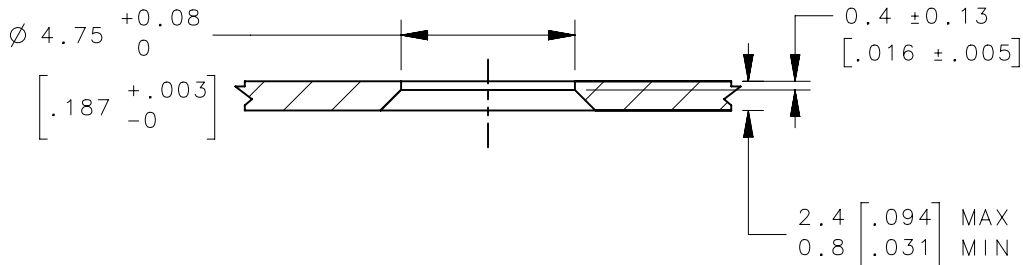
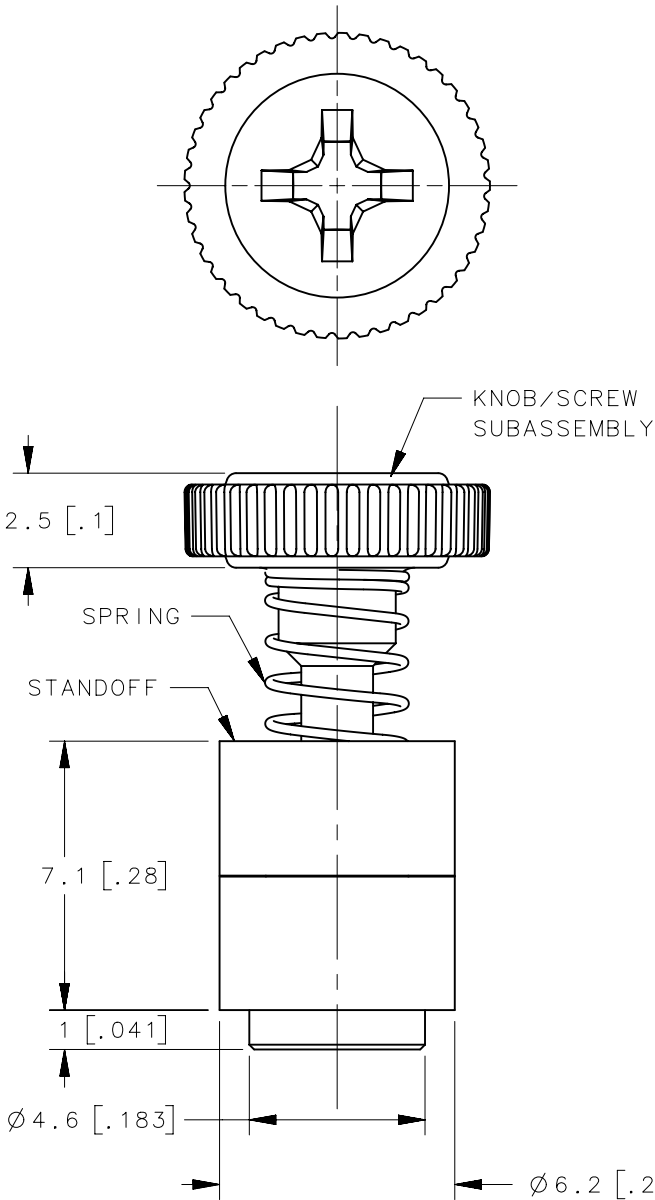
SCALE 1:1



UNFASTENED



INSTALLATION
(FASTENED)



PANEL PREPARATION

- NOTES:
- A. MATERIAL AND FINISH: RoHS COMPLIANT
 KNOB: PC/ABS UL94 V0 RATED, FLAME RETARDANT;TRIARYLPHOSPHATE (DOES NOT CONTAIN BROMINATED, CHLORINATED, OR HALOGENATED ADDITIVES). "EEE" IN PART NUMBER DENOTES KNOB COLOR.
 SCREW: STEEL, HARDENED, ZINC PLATE PLUS SEALER
 SPRING: 300 SERIES STAINLESS STEEL, PASSIVATED
 STANDOFF: 6000 SERIES ALUMINUM, NATURAL
- B. INSTALLATION INSTRUCTIONS:
1. PREPARE THE HOLE IN THE PANEL, COUNTERSINK UNDERSIDE OF THE PANEL AS SHOWN.
 2. USE SOUTHCO INSTALLATION TOOL, PART NUMBER IS 47-104, TO FLARE THIS ASSEMBLY.
 3. SMOOTH FACE PUNCH SURFACE AND INSTALLATION TOOL MUST REMAIN PARALLEL DURING FLARING OF STANDOFF. ONLY USE LIGHT PRESSURE TO FLARE STANDOFF. RECOMMENDED LOAD OF 3,000N.
- C. RECOMMENDED MAXIMUM TORQUE OF 60 N-cm.
- D. COSMETIC SPECIFICATION: ALL SURFACES (UNLESS OTHERWISE SPECIFIED) ARE TO BE PER SOUTHCO SPECIFICATION S-121-02 AND S-121-04, CLASS B (REFER TO SECTION 1.0 FOR CROSS REFERENCE TABLE).

"EEE" KNOB COLOR
SEE J-47-0-3 FOR DETAIL

52-36-11-4-EEE	SMOOTH	T15 TORX®
52-35-11-4-EEE	KNURLED	T15 TORX®
52-33-11-4-EEE	SMOOTH	No. 2 PHILLIPS
52-31-11-4-EEE	KNURLED	No. 2 PHILLIPS
PART NUMBER	KNOB STYLE	SCREW RECESS
THIRD ANGLE PROJECTION		
MILLIMETERS [IN]		
TOLERANCES UNLESS OTHERWISE NOTED		
ALL DIMENSIONS WITHOUT TOLERANCES ARE FOR REFERENCE ONLY.		
PROPRIETARY ITEM EXCEPT FOR USES EXPRESSLY GRANTED IN WRITING, INFORMATION DISCLOSED HEREON IS CONFIDENTIAL AND ALL RIGHTS, PATENT AND OTHERWISE, ARE RESERVED BY SOUTHCO, INC.		
PER ASME Y14.5M-1994		
SIZE A3	SYSTEM NX	DWG NO. J-52-1-M3
DRAWN BY JQ/TVA	DATE 04MAR2011	SCALE 5:1
SHEET 1 OF 1		

southco®
CONNECT • CREATE • INNOVATE

OVERMOLD 52 ASSEMBLY, M3 THREAD
FLARE-IN STYLE